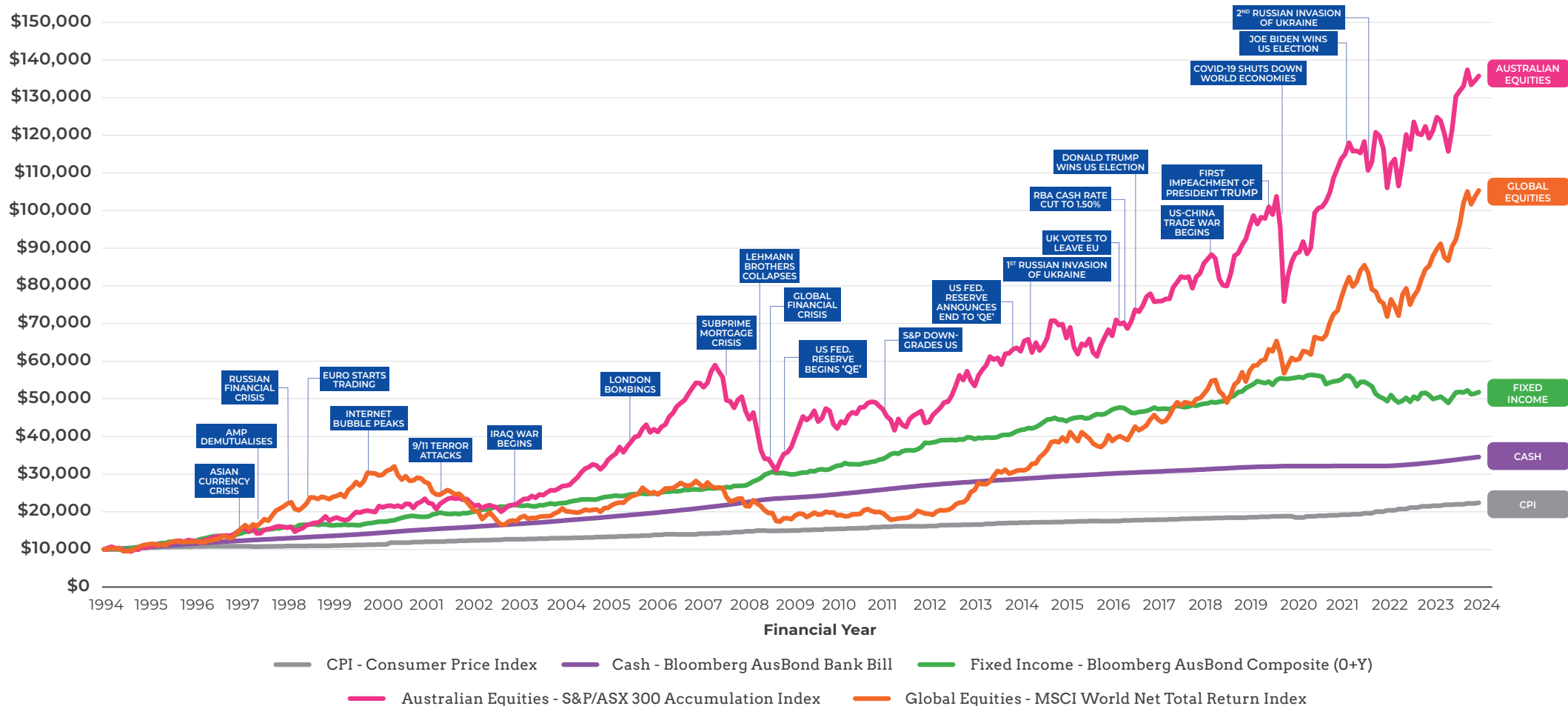


The value of long-term investing

The value of \$10,000 invested since 1994[^]



More information

Adviser Services 1800 062 725
 Investor Services 1800 022 033
 Email investments@perpetual.com.au
perpetual.com.au



Source: FactSet and Perpetual Asset Management | Past performance is not indicative of future performance. | ^Assumes reinvestment of all dividends and income.

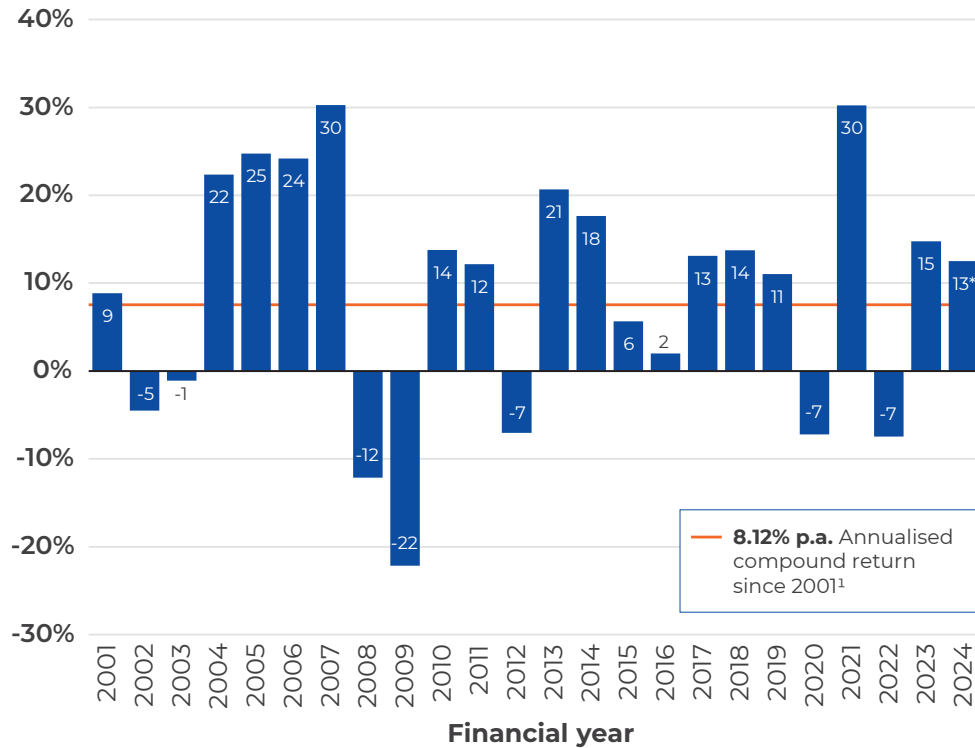
This information has been prepared by Perpetual Investment Management Limited (PIML) ABN 18 000 866 535. It is general information only and is not intended to provide you with financial advice or take into account your objectives, financial situation or needs. You should consider, with a financial adviser, whether the information is suitable for your circumstances. To the extent permitted by law, no liability is accepted for any loss or damage as a result of any reliance on this information. No company in the Perpetual Group guarantees the performance of any fund or the return of an investor's capital (Perpetual Group means Perpetual Limited ABN 86 000 431 827 and its subsidiaries). 3272_0924

Australian & international sharemarkets

Annual movements as at June 2024

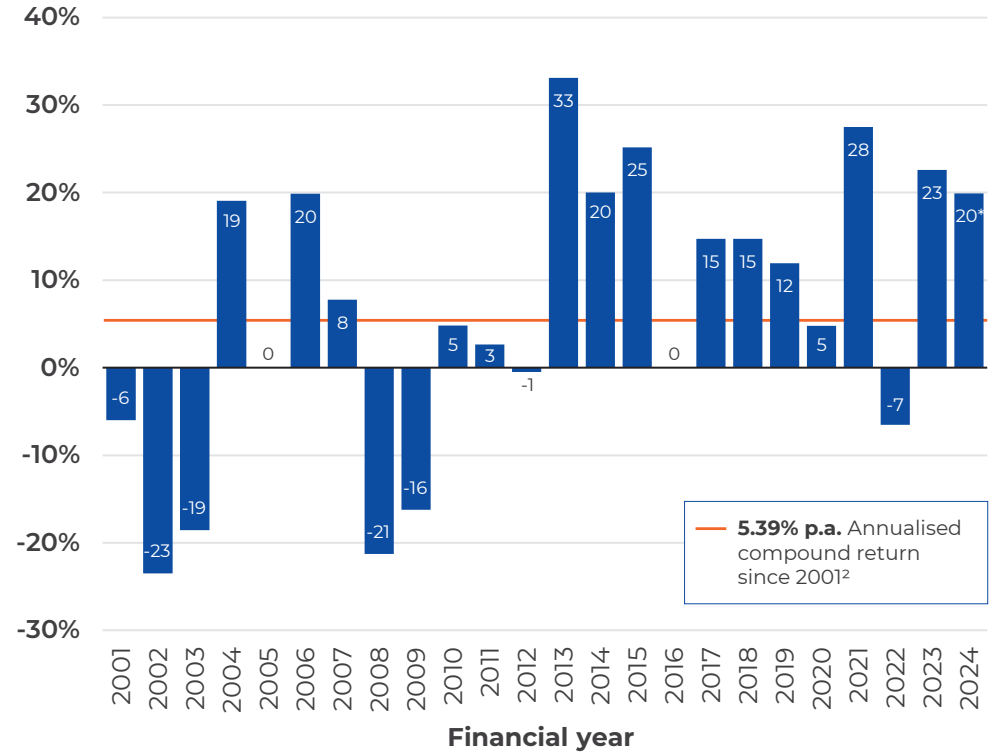
Australian sharemarket

8.12% p.a. annualised compound return since 2001¹



International sharemarket

5.39% p.a. annualised compound return since 2001²



More information

Adviser Services 1800 062 725
 Investor Services 1800 022 033
 Email investments@perpetual.com.au
perpetual.com.au



PENDAL



Source: FactSet. | 1. Annual returns for the period from COB 30/06/2000 to 30/06/2024 as measured by the S&P/ASX All Ordinaries Accumulation Index. 2. Annual returns for the period from COB 30/06/2000 to 30/06/2024 as measured by the MSCI World ex Australia Net Total Return Index. | *Financial Year to Date, as at 30/06/2024 | Past performance is not indicative of future performance.

This information has been prepared by Perpetual Investment Management Limited (PIML) ABN 18 000 866 535. It is general information only and is not intended to provide you with financial advice or take into account your objectives, financial situation or needs. You should consider, with a financial adviser, whether the information is suitable for your circumstances. To the extent permitted by law, no liability is accepted for any loss or damage as a result of any reliance on this information. No company in the Perpetual Group guarantees the performance of any fund or the return of an investor's capital (Perpetual Group means Perpetual Limited ABN 86 000 431 827 and its subsidiaries). 3272_0924